

CARLO RAIMONDI



Tower Crane

Top Less MR81+3

Luffing Jib Crane

MR81+3

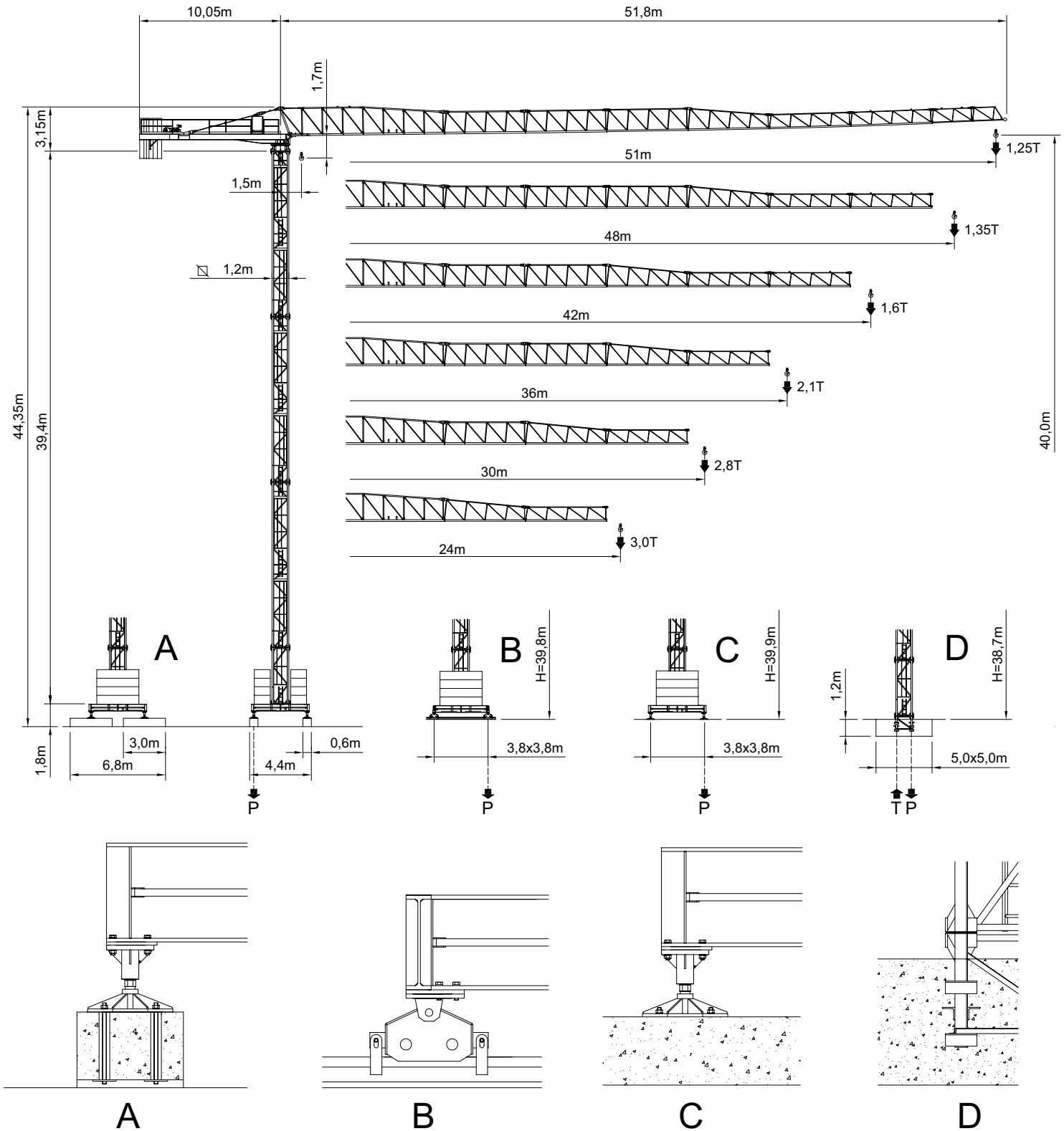
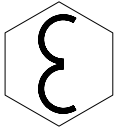
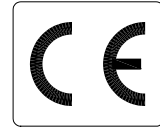
Perfetta sintesi di semplicità, efficienza ed affidabilità. È realizzata con materiali strutturali di alta qualità e dispone di un braccio da 51 metri. Si monta facilmente e velocemente, e può operare agevolmente anche in centri urbani.

MR81+3





Perfect synthesis of simplicity, efficiency and reliability. This crane is manufactured with high-level structural materials and is equipped with a 51 m. jib. It can be assembled easily and quickly and is ideal for operation in urban areas too.

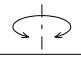
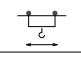
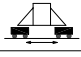
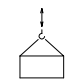


City Crane MR 81+3

GRU A TORRE A MONTAGGIO RAPIDO
«CITY TOWER CRANE»



RAGGI E PORTATE
RADIUS AND S.W.L.
PORTEE ET CHARGE UTILE
AUSLADUNG UND TRAGFAHIGKEIT

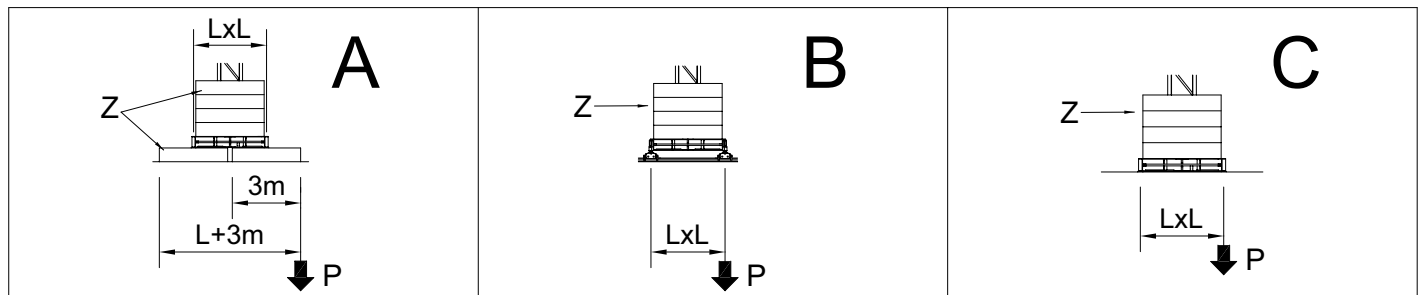
Portata max / Max s.w.l. Charge maxi / Max. Tragfähigkeit		2500 kg. 					3000 kg. 					2500  / 5000 kg. 						
Braccio / Jib Ausleger / Flèche	m.	30	36	42	48	51	30	36	42	48	51	24	30	36	42	48	51	
Campo di portata max da Max s.w.l. range from Charge maxi de Max. Tragfähigkeit von	1,5 m a to à bis	30,0	30,8	28,4	28,1	28,0	28,2	26,2	24,1	23,9	23,8	17,3	17,3	16,0	14,7	14,5	14,4	
Raggi (m.) Radii (m.) Portée (m.) Ausladung (m.)	14	2500	2500	2500	2500	2500	3000	3000	3000	3000	3000	5000	5000	5000	5000	5000	5000	
	16	2500	2500	2500	2500	2500	3000	3000	3000	3000	3000	5000	5000	4994	4544	4475	4449	
	18	2500	2500	2500	2500	2500	3000	3000	3000	3000	3000	4804	4774	4384	3986	3925	3902	
	20	2500	2500	2500	2500	2500	3000	3000	3000	3000	3000	4279	4249	3900	3543	3488	3467	
	22	2500	2500	2500	2500	2500	3000	3000	3000	3000	3000	3853	3823	3506	3183	3133	3115	
	24	2500	2500	2500	2500	2500	3000	3000	3000	2991	2981	3500	3470	3180	2885	2839	2822	
	26	2500	2500	2500	2500	2500	3000	3000	2766	2736	2726		3173	2906	2634	2592	2576	
	28	2500	2500	2500	2500	2500	3000	2787	2545	2518	2509		2919	2672	2420	2381	2366	
	30	2500	2500	2355	2329	2321	2800	2580	2355	2329	2321		2700	2469	2234	2198	2185	
	32		2399	2189	2165	2157		2399	2189	2165	2157			2293	2073	2039	2026	
	34		2241	2043	2020	2013		2241	2043	2020	2013			2138	1931	1899	1887	
	36		2100	1913	1892	1885		2100	1913	1892	1885			2000	1805	1775	1764	
	38				1798	1777	1771			1798	1777	1771				1692	1664	1653
	40				1694	1675	1668			1694	1675	1668				1591	1564	1554
	42				1600	1582	1576			1600	1582	1576				1500	1474	1465
44					1497	1492				1497	1492						1393	1383
46					1420	1415				1420	1415						1318	1309
48					1350	1345				1350	1345						1250	1242
51						1250					1250							1150

		Velocità / Speed / Vitesse / Geschwindigkeit		Potenza / Power / Puissance / Leistung	
Rotazione-Slewing Orientation-Schwenken		0,37 / 0,7 / 1,0 min ⁻¹		4,0 Kw	
Carrello-Trolley Chariot-Katzfahren		28,5 / 57 m/min		1,1/2,2Kw	
Traslazione-Rail Translation-Kranfahren		14 m/min		2 x 2,9 Kw	
Argano-Winch Treuil-Hubwerk		Marcia Step Vitesse Gang	Carico / velocità - Load / speed Charge / vitesse - Tragfähigkeit / Geschwindigkeit		
					
Tipo Type Type Typ	15 HP 11 Kw - 2,5	1	2500 Kg - 5,2 m/min		-
		2	2500 Kg - 21 m/min		-
		3	1250 Kg - 42 m/min		-
	25 HP 18,4 Kw - 3	1	3000 Kg - 7,5 m/min		-
		2	3000 Kg - 30 m/min		-
		3	1500 Kg - 60 m/min		-
	25 HP 18,4 Kw - 5	1	2500 Kg - 8,8 m/min		5000 Kg - 4,4 m/min
		2	2500 Kg - 35 m/min		5000 Kg - 17,5 m/min
		3	1250 Kg - 70 m/min		2500 Kg - 35 m/min
	25 HP 18,4 Kw - 3 VF	1	3000 Kg - 6 m/min		-
		2	3000 Kg - 30 m/min		-
		3	1500 Kg - 60 m/min		-
		4	1000 Kg - 72 m/min		-
	25 HP 18,4 Kw - 5 VF	1	2500 Kg - 8,8 m/min		5000 Kg - 4,4 m/min
		2	2500 Kg - 35 m/min		5000 Kg - 17,5 m/min
		3	1250 Kg - 70 m/min		2500 Kg - 35 m/min
4		850 Kg - 84 m/min		1700 Kg - 42 m/min	

Conforme alla direttiva CEE 85/534 sul livello acustico - In compliance with the EEC 84/534 instruction on noise level - Conforme à directive CEE 84/534 sur le niveau acoustique
Gemäss EWG 84/534 über Schall - Leistungspegel - Conforme con la direttiva CEE 84/534 sobre el nivel acustico.

FORZA MOTRICE TOTALE TOTAL INSTALLED POWER PUISSANCE TOTALE DES MOTEURS GESAMT-MOTORENLEISTUNG	11 Kw (15HP)	18,4 Kw (25HP)
	23 Kw	31 Kw

ALTEZZA SOTTO-GANCIO, ZAVORRA DI BASE, REAZIONI
H.U.H., MAX. BASE BALLAST AND CORNER PRESSURE
H.S.C., LEST DE BASE MAXI ET REACTIONS
HAKENHOHEN, MAXIMALE ZENTRALBALLASTE UND ECKKRAFT



SU BASE / ON CROSSBASE
SUR CHASSIS / AUF KREUZRAHME

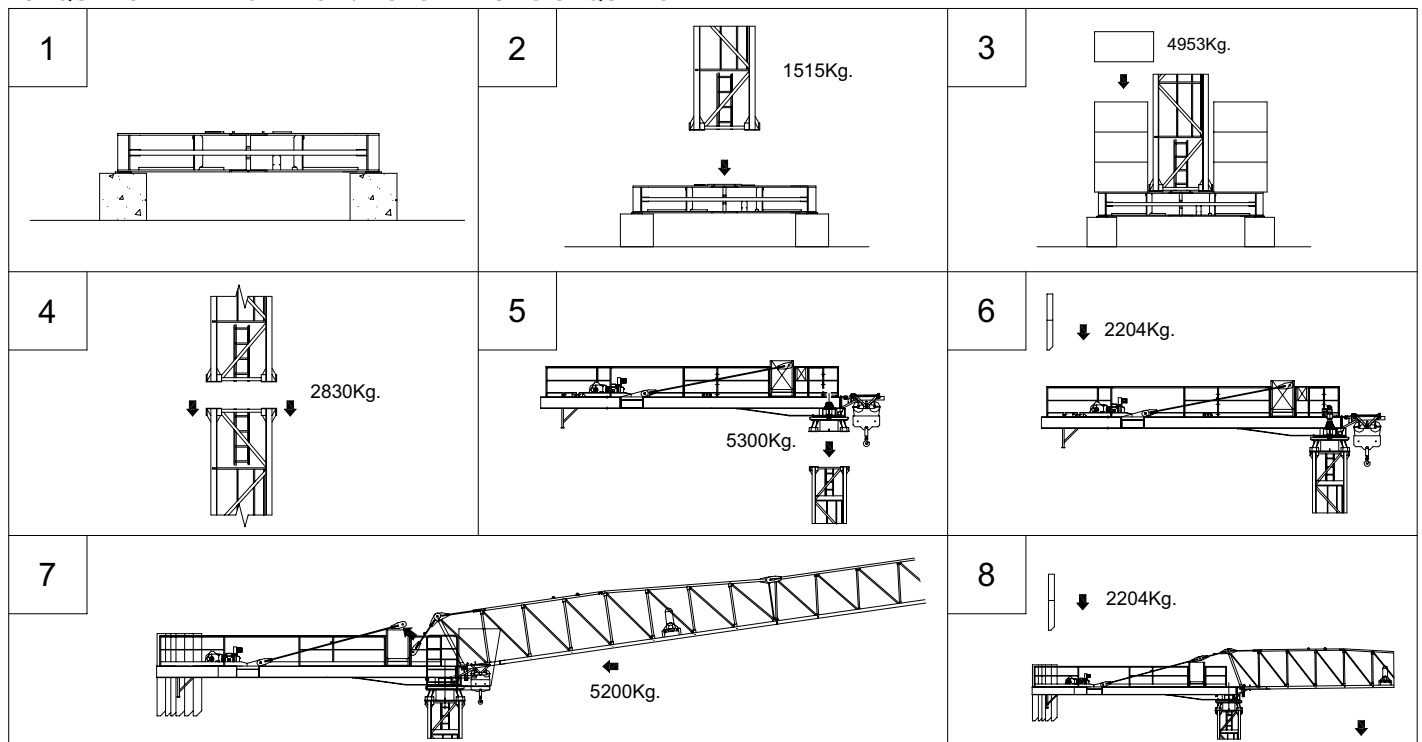
L = 3,8 m (□ 1,2m)

H (m)	max. Z (t)	P (kN)	H (m)	max. Z (t)	P (kN)	H (m)	max. Z (t)	P (kN)
40,0	49,5	540	39,8	49,5	522	39,4	49,5	519
36,0	49,5	408	35,8	49,5	402	35,4	49,5	399
30,1	49,5	353	29,9	49,5	353	29,5	49,5	347
24,2	39,6	300	24,0	39,6	308	23,6	39,6	305
18,3	39,6	281	18,1	39,6	289	17,7	39,6	286

SU PLINTO / STATIONARY
SUR PIEDS DE SCELLEMENT / STATIONAR

H (m)	17,0	22,9	28,8	34,7	38,7
T (kN)	480	526	582	661	835
P (kN)	594	647	713	794	982
q max. (Kg/cm ²)	0,970	1,047	1,151	1,293	1,805

SEQUENZA DI MONTAGGIO / ASSEMBLING SEQUENCE
SEQUENCE DE MAONTAGE / AUFSTELLUNG SEQUENCE



CARLO RAIMONDI FU R. SPA

Corso Garibaldi, 253
20025 Legnano - ITALY
Tel. 0331 / 548061-450239
FAX 0331 / 450400