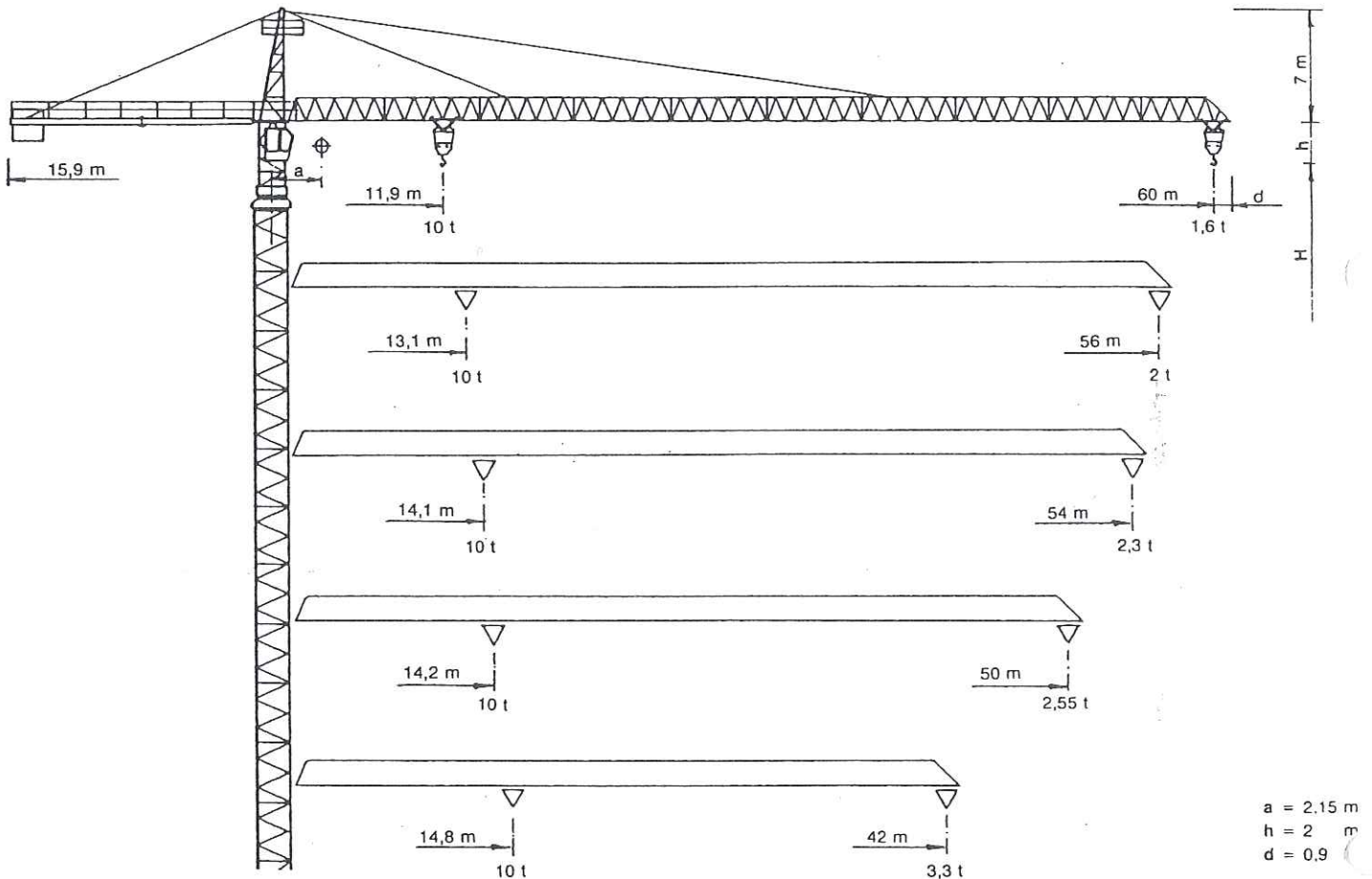
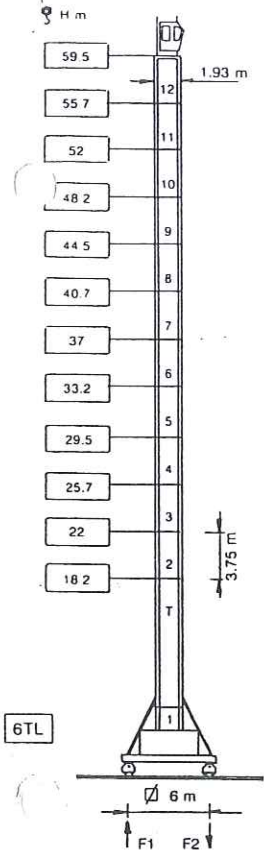


## CT602 16-100



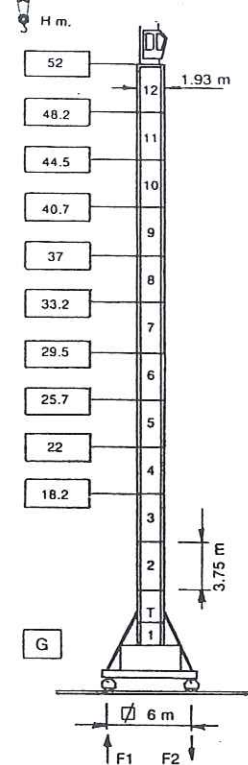
Sbracci e portate - Radius and capacity

	10	15	18	21	24	27	30	33	36	39	42	45	50	52	54	56	60
5 t ÷ 23,6 m (II)	5	5	5	5	4,91	4,29	3,8	3,4	3,07	2,78	2,54	2,33	2,04	1,94	1,84	1,75	1,6
10 t ÷ 11,9 m (IV)	10	7,76	6,29	5,23	4,45	3,83	3,34	2,94	2,61	2,32	2,08	1,87	1,58	1,48	1,38	1,29	1,14
5 t ÷ 26 m (II)	5	5	5	5	5	4,8	4,25	3,81	3,44	3,13	2,86	2,63	2,31	2,2	2,09	2	
10 t ÷ 13,1 m (IV)	10	8,66	7,04	5,88	5,01	4,34	3,79	3,35	2,98	2,67	2,4	2,17	1,85	1,74	1,63	1,54	
5 t ÷ 27,9 m (II)	5	5	5	5	5	5	4,62	4,15	3,75	3,41	3,13	2,88	2,53	2,41	2,3		
10 t ÷ 14,1 m (IV)	10	9,39	7,65	6,4	5,47	4,74	4,15	3,69	3,29	2,95	2,67	2,42	2,07	1,95	1,84		
5 t ÷ 28,1 m (II)	5	5	5	5	5	5	4,65	4,17	3,77	3,44	3,15	2,9	2,55				
10 t ÷ 14,2 m (IV)	10	9,45	7,7	6,45	5,51	4,77	4,19	3,71	3,31	2,98	2,69	2,44	2,09				
5 t ÷ 29,2 m (II)	5	5	5	5	5	5	4,86	4,36	3,95	3,6	3,3						
10 t ÷ 14,8 m (IV)	10	9,87	8,04	6,74	5,77	5,01	4,4	3,9	3,49	3,14	2,84						



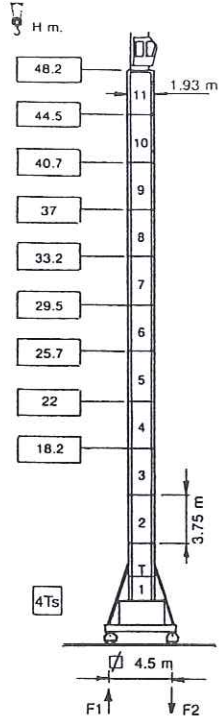
6TL

	★	●
F1		19.6 t
F2	76 t	99.9 t
	48 t	



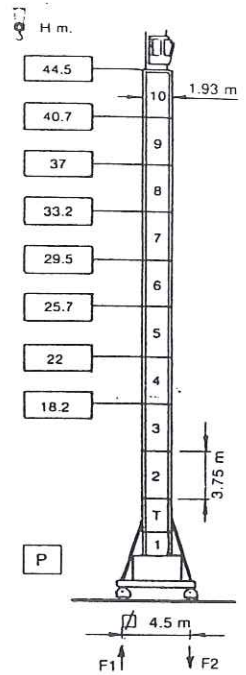
G

	★	●
F1		
F2	71.5 t	85 t
	44.5 t	



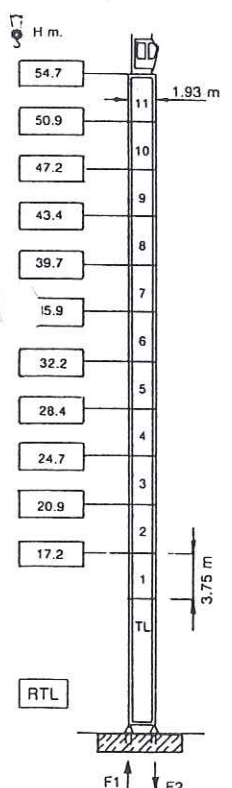
4Ts

	★	●
F1		16 t
F2	78 t	91 t
	41.7 t	



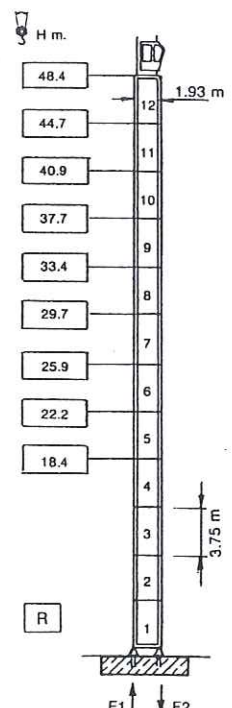
P

	★	●
F1		9 t
F2	75.5 t	82 t
	40 t	



RTL

	★	●
F1	81 t	148 t
F2	117 t	183 t
	45.5 t	



R

	★	●
F1	74 t	113 t
F2	108 t	146 t
	41.8 t	

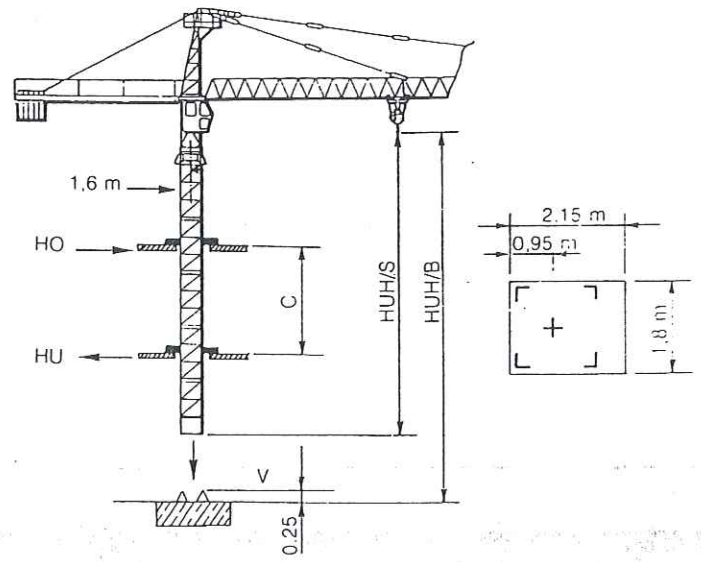
- ★ In servizio
- Fuori servizio
- Peso gru senza zavorra max H max sbraccio
- ★ In service
- Out of service
- Weight without ballast max height, max jib length

H > H max consultateci  
H > H max consult us

Versione climbing:  
si può effettuare anche con torre da 1,93 m.










Per maggiori dettagli consultateci

Climbing version:  
it can be performed even with a tower of 1,93 m.








POTENZA TOTALE RICHIESTA NECESSARY POWER SUPPLY	ARGANI WINCHES	CORRENTE TRIFASE THREE-PHASE CURRENT
36 Kw	AG 33/2	380 V - 50 Hz
42 Kw	AG 40/2	380 V - 50 Hz
42 Kw	AWLR 404	380 V - 50 Hz
50 Kw	AWLR 505	380 V - 50 Hz

ARGANI - WINCHES		m/min	f	HP	KW		
AG 33/2		7,5	4	33	24,3	250 m max	
		30	4				
		60	2				
		3,8	8			> 250 m consultateci consult us	
		15	8				
		30	4				
AG 40/2		7,5	5	40	29		220 m max
		30	5				
		60	2,5				
		3,8	10			> 220 m consultateci consult us	
		15	10				
		30	5				
AWLR 404		0 → 36	4	40	29		430 m max
		0 → 45	3,2				
		0 → 60	2,4				
		0 → 90	1,6				
		0 → 18	8			> 430 m consultateci consult us	
		0 → 22,5	6,4				
		0 → 30	4,8				
		0 → 45	3,2				
AWLR 505		0 → 40	5	50	37		350 m max
		0 → 50	4				
		0 → 66	3				
		0 → 100	2				
		0 → 20	10			> 350 m consultateci consult us	
		0 → 25	8				
		0 → 33	6				
		0 → 50	4				

Soggetto a modifiche - Subject to alterations

CARRELLI - TROLLEY		C3V	0-10-30-60 m/min	5/4 da Nm	3,6 Kw
ROTAZIONE - SLEWING		RVP	0 ÷ 0,8 n/min	2 x 5 da Nm	2 x 3,6 Kw
TRASLAZIONE - TRAVELLING		TR-TC	0-24 m/min	2 x 5,5 Hp	2 x 4 Kw

In accordo con le normative C.E.E. 87/405 riguardanti il livello acustico.  
In accordance with C.E.E. standards 87/405 for the acoustic level.

 **GRUCOMEDIL**

Via S. Egidio 42/A - 33074 Fontanafredda (PN) - ITALY  
Tel. 0434/997580 - Telex 450256 GRUCOM I - Telefax 0434 - 998631

CASAGRANDE GROUP

AGENTE/DEALER